

**Sight 'n Sound at the
Mount Nelson Hotel**
Bryn Jupp-AV Manager
Tel: +27 21 483 1967
sight@mountnelson.co.za
www.sightsound.co.za

Union Castle



Conference & Banqueting



Located on the hotel's first floor, The Union Castle room is reminiscent of the hotel's historic link with the shipping line and its seafaring passengers, many of whom were guests at the hotel. The room is appropriately decorated in the style of one of the luxurious staterooms that graced the great ocean liners of old. A compact venue, it is ideally suited to board meetings, smaller conferences and formal lunches or dinners.

This venue is ideally suited for the use of a standard 42in plasma or LCD screen but can have any size installed. The plasma can be configured to run any feed from a video source to a standard VGA com-port for your laptop. A plasma is perfect for displaying DVD presentations or camera relay and as there is no projection required you can have more free space on the table top. A plasma's definition and resolution far surpasses that of an entry level projector and is therefore a perfect alternative to the room's standard set-up.



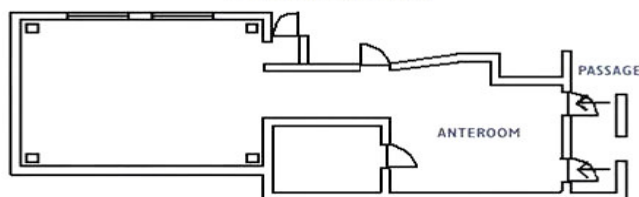
The Union Castle's typical set-up consists of a 2.4m x 1.8m (8x6) ceiling mounted screen set up with a Panasonic projector on the end of the boardroom table. This also allows for accessible power connectivity for everything including your laptop. A complimentary flip chart with stationary is included in your daily delegates package and you can also opt to have a Zound system installed with an IPOD docking station, built in FM radio and auxiliary audio inputs for a mic or PC audio.



This venue is ideal for an office set-up including conference calls with both wired and wireless internet connectivity. You may also consider the use of a high volume fax/printer or create a small office network in this cozy, professional environment.



THE UNION CASTLE ROOM
MOUNT NELSON HOTEL



Please don't hesitate to contact our AV manager Bryn Jupp on (021) 483 1967.

Technical Specs

- Room dimensions = 7.45m x 5.70m x 2.68m.
- Un-interrupted power supply.
- Air-conditioning
- Wired and wireless broadband connectivity.
- Separate entrance with reception area.
- Telephone with extra lines.
- Built-in ceiling mounted screen.

www.sightsound.co.za